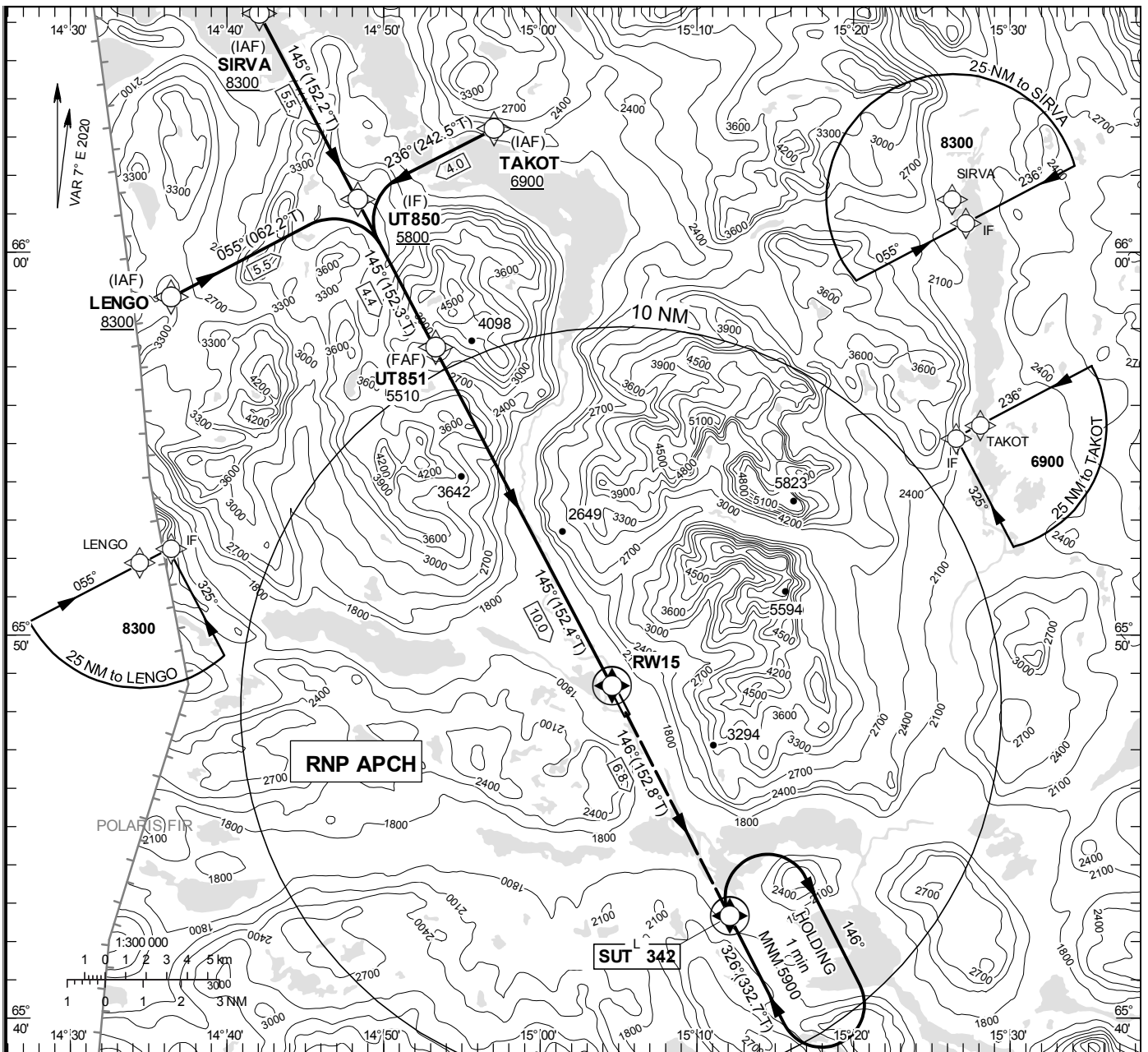


**INSTRUMENT APPROACH CHART – ICAO**

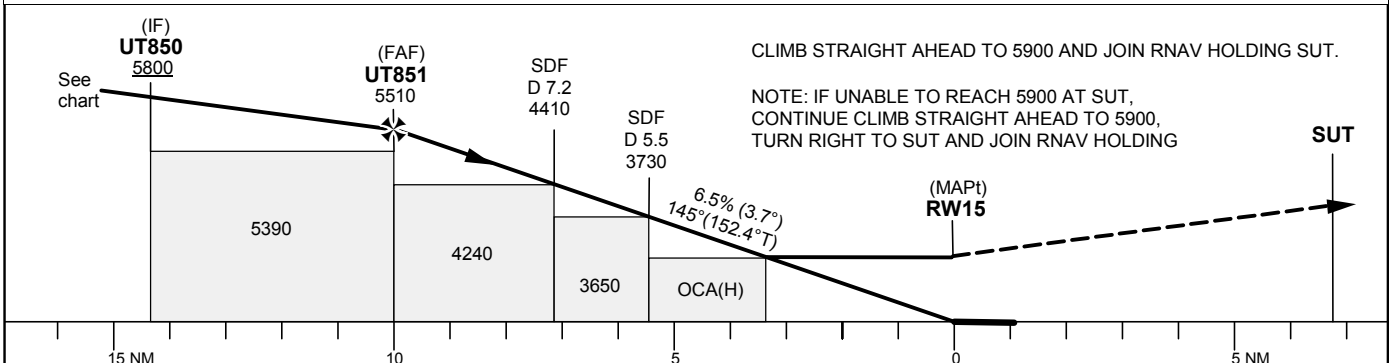
**THR ELEV 1503 ft, AD ELEV 1503 ft**  
 OCH are related to THR.  
 BRG are MAG (True).  
 ALT, HGT and ELEV in ft.

HEMAVAN INFORMATION 122.980

**RNP RWY 15 (LNAV only)**



TA 9000 ft AMSL RDH 50 ft



Cat of ACFT	OCA (H)		Final approach	Distance FAF-MAPt 10.0 NM					
	A	B		Dist to RW 15	9	8	7	6	5
LNAV missed APCH climb grad 2.5%	3080	(1580)	ALT	5120	4720	4320	3930	3530	3140
LNAV missed APCH climb grad 3.0%	3040	(1540)	GS	kt	80	100	120	140	
LNAV missed APCH climb grad 4.0%	2950	(1450)	Rate of descent	ft/min	530	660	790	925	

## RNP RWY 15 via SIRVA

Path Desc	Waypoint Identifier	Fly-over	Course °M(°T)	Dist (NM)	Turn Dir	Altitude	Speed	VPA/RDH	Rec Navaid	Navigation Specification
IF	SIRVA	-	-	-	-	+8300	-	-	-	RNP APCH
TF	UT850	-	145°(152.2°)	5.5	-	+5800	-	-	-	RNP APCH

## RNP RWY 15 via TAKOT

Path Desc	Waypoint Identifier	Fly-over	Course °M(°T)	Dist (NM)	Turn Dir	Altitude	Speed	VPA/RDH	Rec Navaid	Navigation Specification
IF	TAKOT	-	-	-	-	+6900	-	-	-	RNP APCH
TF	UT850	-	236°(242.5°)	4.0	-	+5800	-	-	-	RNP APCH

## RNP RWY 15 via LENGO

Path Desc	Waypoint Identifier	Fly-over	Course °M(°T)	Dist (NM)	Turn Dir	Altitude	Speed	VPA/RDH	Rec Navaid	Navigation Specification
IF	LENGO	-	-	-	-	+8300	-	-	-	RNP APCH
TF	UT850	-	055°(062.2°)	5.5	-	+5800	-	-	-	RNP APCH

Path Desc	Waypoint Identifier	Fly-over	Course °M(°T)	Dist (NM)	Turn Dir	Altitude	Speed	VPA/RDH	Rec Navaid	Navigation Specification
IF	UT850	-	-	-	-	+5800	-	-	-	RNP APCH
TF	UT851	-	145°(152.3°)	4.4	-	@5510	-	-	-	RNP APCH
TF	RW15	Y	145°(152.4°)	10.0	-	@1553	-	-	-	RNP APCH
TF	SUT	Y	146°(152.8°)	-	-	-	-	-	-	RNP APCH
HM	SUT	Y	326°(332.7°)	-	R	+5900	-	-	-	RNAV 1