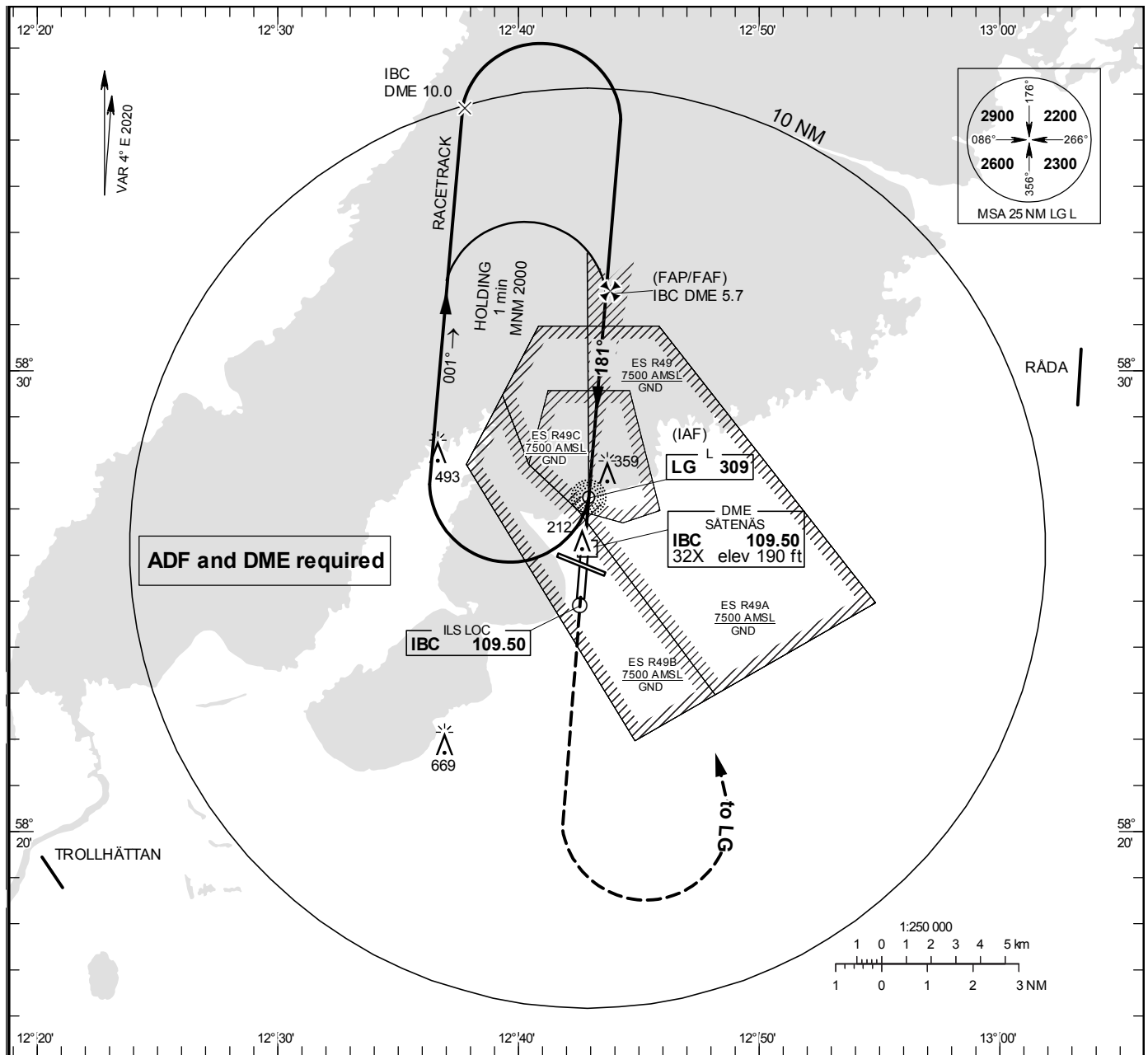


ILS or LOC RWY 19

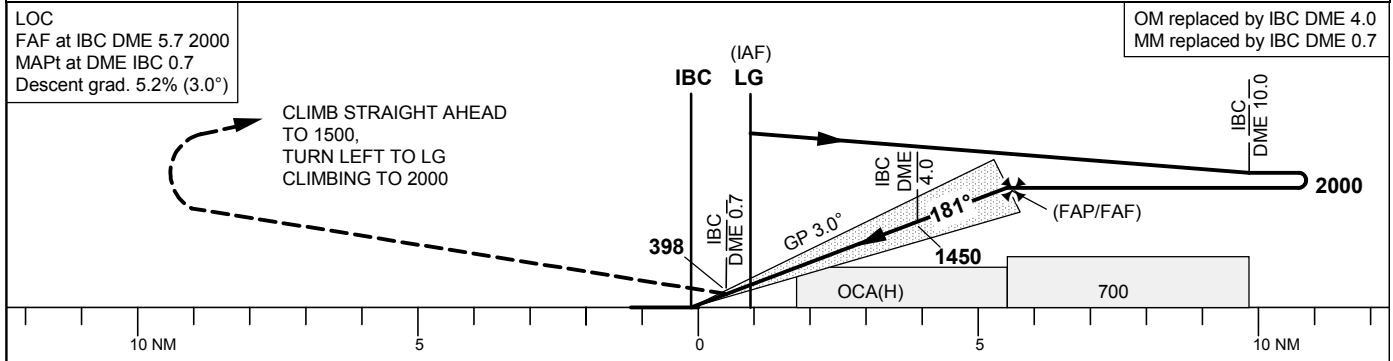
SÄTENÄS TOWER	128.200
SÄTENÄS APPROACH	134.550

THR ELEV 175.3 ft, AD ELEV 181 ft
 OCH are related to THR.
 Circling OCH are related to AD ELEV.
 BRG are MAG
 ALT. HGT and ELEV in ft.

INSTRUMENT
 APPROACH
 CHART – ICAO



TA 5000 ft AMSL RDH 50.5 ft *Timing not authorized for defining the MAPt



Cat of ACFT	OCA (H)				Final approach LOC Distance FAF-MAPt 5.0 NM*							
	A	B	C	D	DME IBC NM	2	3	4	5			
Straight-in Approach	Cat I	324 (148)	334 (158)	347 (171)	360 (184)	810	1130	1450	1770			
	LOC	550 (380)				GS	kt 80	100	120	140	160	180
Circling		660 (480)	660 (480)	890 (710)	1070 (890)	Time	min:s 3:46	3:01	2:31	2:09	1:53	1:41
						Rate of descent	ft/min 425	530	635	745	850	955