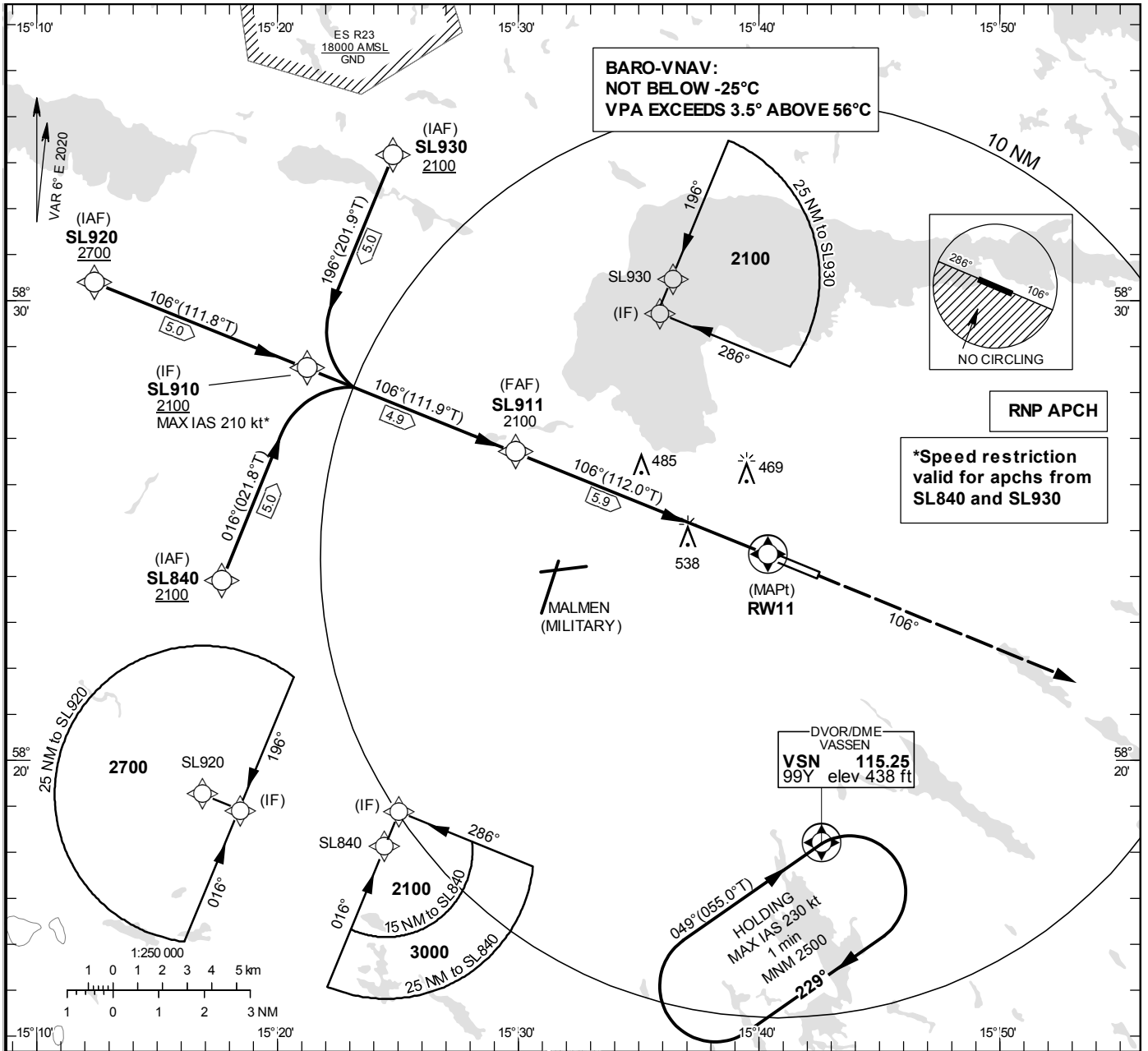


**INSTRUMENT
APPROACH
CHART – ICAO**

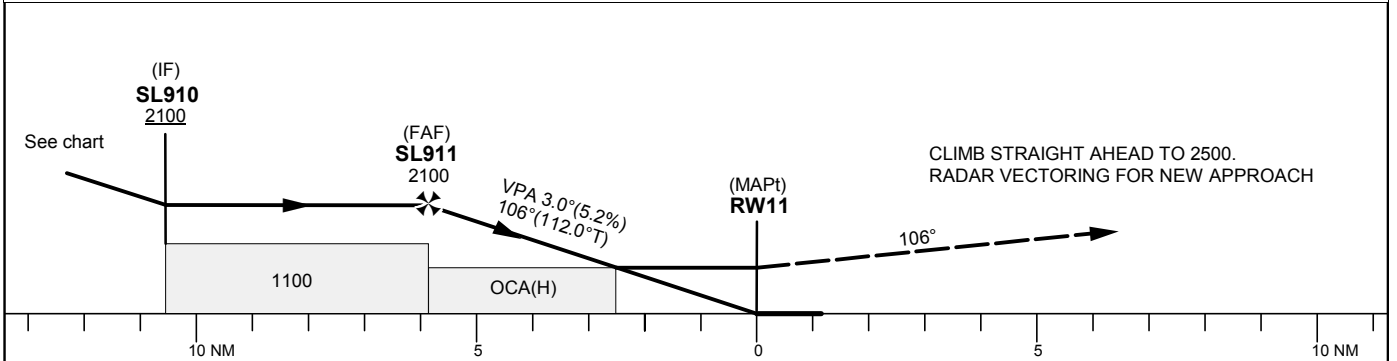
THR ELEV 156.9 ft, AD ELEV 178 ft
OCH are related to THR.
BRG are MAG (True).
ALT, HGT and ELEV in ft.

SAAB TOWER	118.805
ÖSTGÖTA APPROACH	132.955
	135.850

RNP RWY 11
(LNAV, LNAV/VNAV only)



TA 5000 ft AMSL RDH 50 ft



Cat of ACFT	OCA (H)				Final approach	Distance FAF-MAPt 5.9 NM						
	A	B	C	D		Dist to RW11 NM	5	4	3	2		
LNAV/VNAV	668(512)	681(525)	689(533)	699(543)	ALT	1800	1480	1160	840			
LNAV	790(640)				GS	kt	80	100	120	140	160	180
Circling NE RWY	790(620)	790(620)	880(710)	880(710)	Rate of descent	ft/min	425	530	635	745	850	955
Circling Cat D Max IAS 200 kt												

RNP RWY 11 via SL840

Path Desc	Waypoint Identifier	Fly-over	Course °M(°T)	Dist (NM)	Turn Dir	Altitude	Speed	VPA/RDH	Rec Navaid	Navigation Specification
IF	SL840	-	-	-	-	+2100	-	-	-	RNP APCH
TF	SL910	-	016°(021.8°)	5.0	-	-	-210	-	-	RNP APCH

RNP RWY 11 via SL920

Path Desc	Waypoint Identifier	Fly-over	Course °M(°T)	Dist (NM)	Turn Dir	Altitude	Speed	VPA/RDH	Rec Navaid	Navigation Specification
IF	SL920	-	-	-	-	+2700	-	-	-	RNP APCH
TF	SL910	-	106°(111.8°)	5.0	-	-	-	-	-	RNP APCH

RNP RWY 11 via SL930

Path Desc	Waypoint Identifier	Fly-over	Course °M(°T)	Dist (NM)	Turn Dir	Altitude	Speed	VPA/RDH	Rec Navaid	Navigation Specification
IF	SL930	-	-	-	-	+2100	-	-	-	RNP APCH
TF	SL910	-	196°(201.9°)	5.0	-	-	-210	-	-	RNP APCH

Path Desc	Waypoint Identifier	Fly-over	Course °M(°T)	Dist (NM)	Turn Dir	Altitude	Speed	VPA/RDH	Rec Navaid	Navigation Specification
IF	SL910	-	-	-	-	+2100	-	-	-	RNP APCH
TF	SL911	-	106°(111.9°)	4.9	-	@2100	-	-	-	RNP APCH
TF	RW11	Y	106°(112.0°)	5.9	-	@207	-	-3.0/50	-	RNP APCH
CA	-	-	106°(112.0°)	-	-	@2500	-	-	-	RNP APCH
VM	-	-	106°	-	-	-	-	-	-	RNP APCH

ESSL Holding VSN

Path Desc	Waypoint Identifier	Fly-over	Course °M(°T)	Dist (NM)	Turn Dir	Altitude	Speed	VPA/RDH	Rec Navaid	Navigation Specification
HM	VSN	Y	049°(055.0°)	-	R	+2500	-230	-	-	RNP 1