

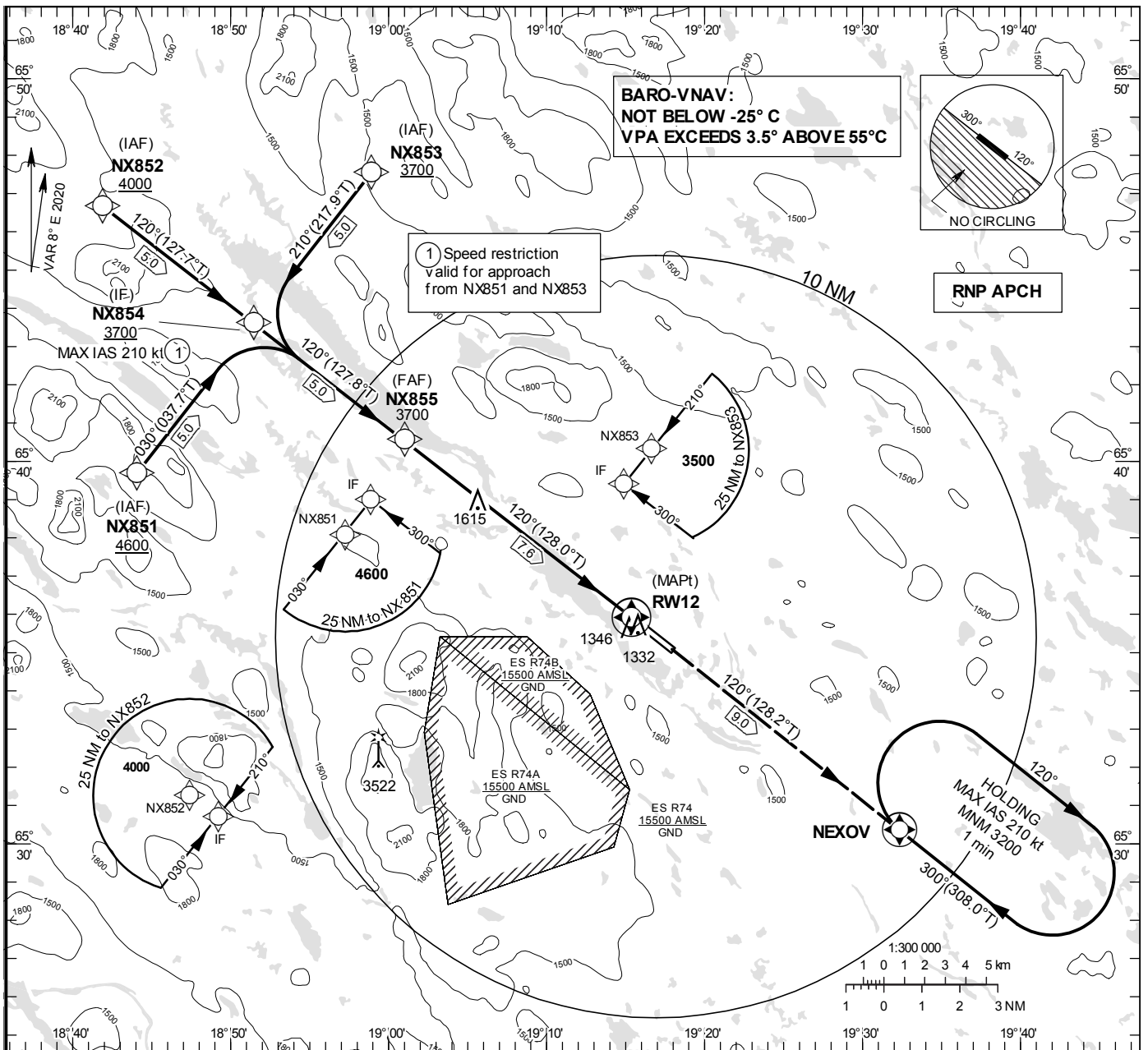
**INSTRUMENT  
APPROACH  
CHART – ICAO**

**THR ELEV 1242.0 ft, AD ELEV 1245 ft**  
 OCH are related to THR.  
 BRG are MAG (True).  
 ALT, HGT and ELEV in ft.

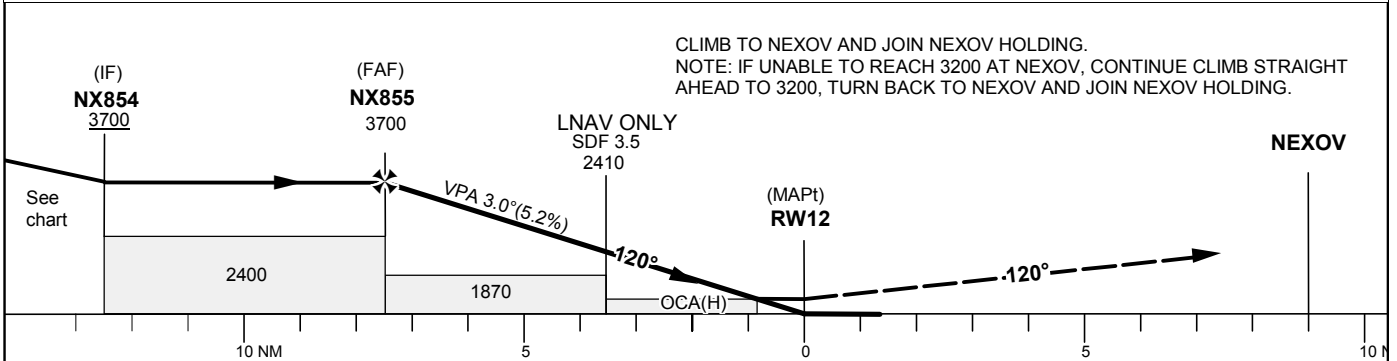
ARVIDSJAUR 122.730  
 TOWER/INFORMATION

**RNP RWY 12**

EGNOS Ch 71144 E12A



TA 5000 ft AMSL RDH 50 ft



Cat of ACFT	OCA (H)				Final approach Dist to RW12	Distance FAF-MAPt 7.6 NM						
	A	B	C	D		7	6	5	4	3	2	1
LPV	1462 (220)	1474 (232)	1483 (241)	1493 (251)	ALT	3520	3200	2880	2570	2250	1930	1610
LNAV/VNAV	1476 (234)	1488 (246)	1496 (254)	1507 (265)	GS	kt	80	100	120	140	160	180
LNAV	1600 (360)				Rate of descent	ft/min	425	530	635	745	850	955
Circling NE RWY	1640 (400)	1740 (500)	2180 (940)	2180 (940)								

## RNP RWY 12 via NX851

Path Desc	Waypoint Identifier	Fly-over	Course °M(°T)	Dist (NM)	Turn Dir	Altitude	Speed	VPA/RDH	Rec Navaid	Navigation Specification
IF	NX851	-	-	-	-	+4600	-	-	-	RNP APCH
TF	NX854	-	030°(037.7°)	5.0	-	+3700	-210	-	-	RNP APCH

## RNP RWY 12 via NX852

Path Desc	Waypoint Identifier	Fly-over	Course °M(°T)	Dist (NM)	Turn Dir	Altitude	Speed	VPA/RDH	Rec Navaid	Navigation Specification
IF	NX852	-	-	-	-	+4000	-	-	-	RNP APCH
TF	NX854	-	120°(127.7°)	5.0	-	+3700	-	-	-	RNP APCH

## RNP RWY 12 via NX853

Path Desc	Waypoint Identifier	Fly-over	Course °M(°T)	Dist (NM)	Turn Dir	Altitude	Speed	VPA/RDH	Rec Navaid	Navigation Specification
IF	NX853	-	-	-	-	+3700	-	-	-	RNP APCH
TF	NX854	-	210°(217.9°)	5.0	-	+3700	-210	-	-	RNP APCH

Path Desc	Waypoint Identifier	Fly-over	Course °M(°T)	Dist (NM)	Turn Dir	Altitude	Speed	VPA/RDH	Rec Navaid	Navigation Specification
IF	NX854	-	-	-	-	+3700	-	-	-	RNP APCH
TF	NX855	-	120°(127.8)	5.0	-	@3700	-	-	-	RNP APCH
TF	RW12	Y	120°(128.0)	7.6	-	@1292	-	-3.00/50	-	RNP APCH
TF	NEXOY	Y	120°(128.2)	9.0	-	-	-	-	-	RNP APCH

## Holding NEXOY

Path Desc	Waypoint Identifier	Fly-over	Course °M(°T)	Dist (NM)	Turn Dir	Altitude	Speed	VPA/RDH	Rec Navaid	Navigation Specification
HM	NEXOY	Y	300°(308.0°)	-	R	+3200	-210	-	-	RNP 1

## FAS Data Block

## RNP RWY 12

## Input data

Operation Type	0
SBAS Provider	1 (EGNOS)
Airport Identifier	ESNX
Runway	12
Runway Letter	0 (None)
Approach Performance Designator	0
Route Indicator	
Reference Path Data Selector	0
Reference Path Identifier	E12A
LTP/FTP Latitude	653554.8010N
LTP/FTP Longitude	0191522.2190E
LTP/FTP Ellipsoidal Height (metres)	406.5
FPAP Latitude	653459.1990N
Delta FPAP Latitude (seconds)	-55.6020
FPAP Longitude	0191812.9195E
Delta FPAP Longitude (seconds)	170.7005
Threshold Crossing Height	50.0
TCH Units Selector	0 (feet)
Glidepath Angle (degrees)	3.00
Course Width (metres)	105.00
Length Offset (metres)	288
HAL (metres)	40.0
VAL (metres)	50.0

## Output data

Data Block	10 18 OE 13 05 0C 00 00 01 32 31 05 62 DF 26 1C D6 8B 43 08 E1 23 9C 4D FE 99 35 05 F4 01 2C 01 64 24 C8 FA 70 98 8C E7
Calculated CRC Value	70988CE7

## Required Additional Data

ICAO Code	ES
LTP/FTP Orthometric Height (metres)	378.6