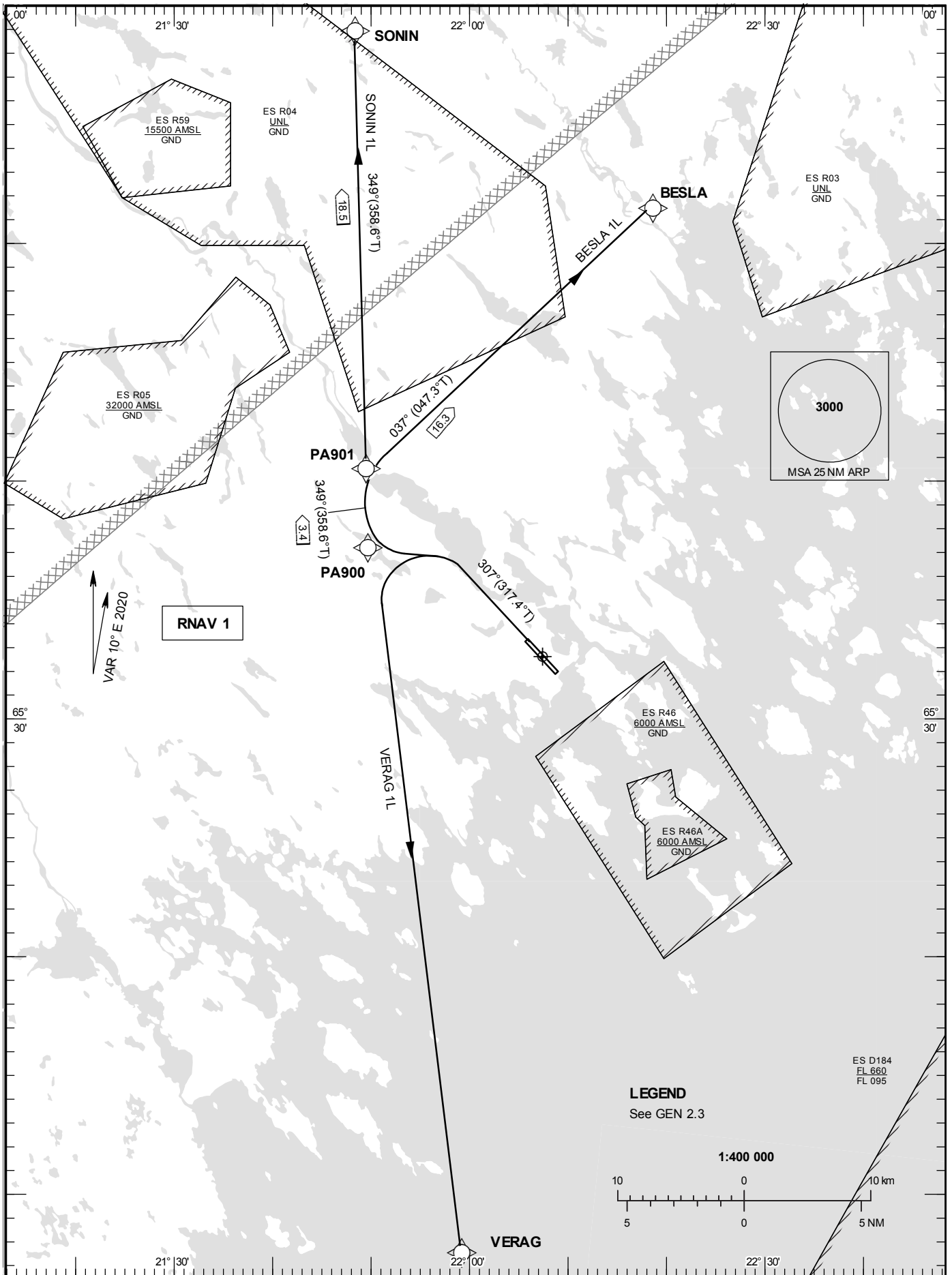


STANDARD INSTRUMENT
DEPARTURE CHART (SID) -
ICAO

HGT and ALT in ft
BRG are MAG
TA 5000 ft AMSL

KALLAX TOWER	128.200
KALLAX APPROACH	125.450

RNAV (GNSS) SID RWY 32



Prescribed Coding of RNAV SID for RWY 32

RNAV 1 for positioning update.

Operators unable to fly RNAV 1 shall inform ATC "UNABLE RNAV SID". Radar vectors will then be provided.

For ATC reasons, aircraft proceeding on SID shall use 6.6% (400 ft/NM) as minimum climb gradient. Aircraft unable to meet with this procedure shall inform ATC.

BESLA 1L

Path Term	Waypoint Identifier	Fly-over	Course °M(°T)	Dist (NM)	Turn Dir	Rest Alts (ft AMSL)	Speed Limits (kt)	VPA/RDH (°/ft)	Rec Navaid	Navigation Specification
CA	-	-	307°(317.4°)	-	L	@1000	-	-	-	RNAV 1
DF	PA900	-	-	-	-	-	-	-	-	RNAV 1
TF	PA901	-	349°(358.6°)	3.4	-	-	-	-	-	RNAV 1
TF	BESLA	-	037°(047.3°)	16.3	-	-	-	-	-	RNAV 1

SID instruction: Climb on track 307°M to 1000 ft, turn left to PA900 – PA901 – BESLA

SONIN 1L

Path Term	Waypoint Identifier	Fly-over	Course °M(°T)	Dist (NM)	Turn Dir	Rest Alts (ft AMSL)	Speed Limits (kt)	VPA/RDH (°/ft)	Rec Navaid	Navigation Specification
CA	-	-	307°(317.4°)	-	L	@1000	-	-	-	RNAV 1
DF	PA900	-	-	-	-	-	-	-	-	RNAV 1
TF	PA901	-	349°(358.6°)	3.4	-	-	-	-	-	RNAV 1
TF	SONIN	-	349°(358.6°)	18.5	-	-	-	-	-	RNAV 1

SID instruction: Climb on track 307°M to 1000 ft, turn left to PA900 – PA901 – SONIN

VERAG 1L

Path Term	Waypoint Identifier	Fly-over	Course °M(°T)	Dist (NM)	Turn Dir	Rest Alts (ft AMSL)	Speed Limits (kt)	VPA/RDH (°/ft)	Rec Navaid	Navigation Specification
CA	-	-	307°(317.4°)	-	L	@1000	-	-	-	RNAV 1
DF	VERAG	-	-	-	-	-	-	-	-	RNAV 1

SID instruction: Climb on track 307°M to 1000 ft, turn left to VERAG