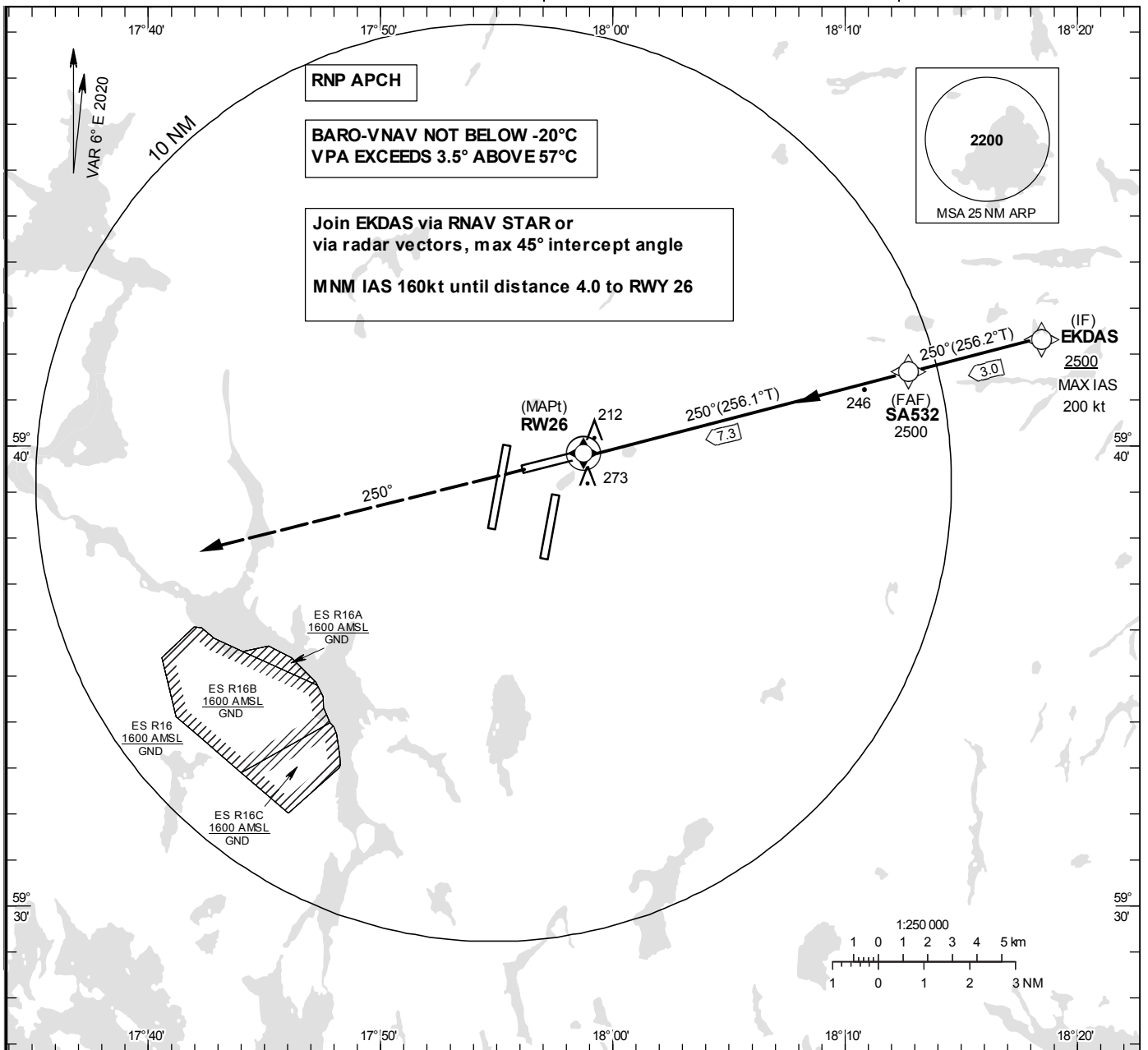


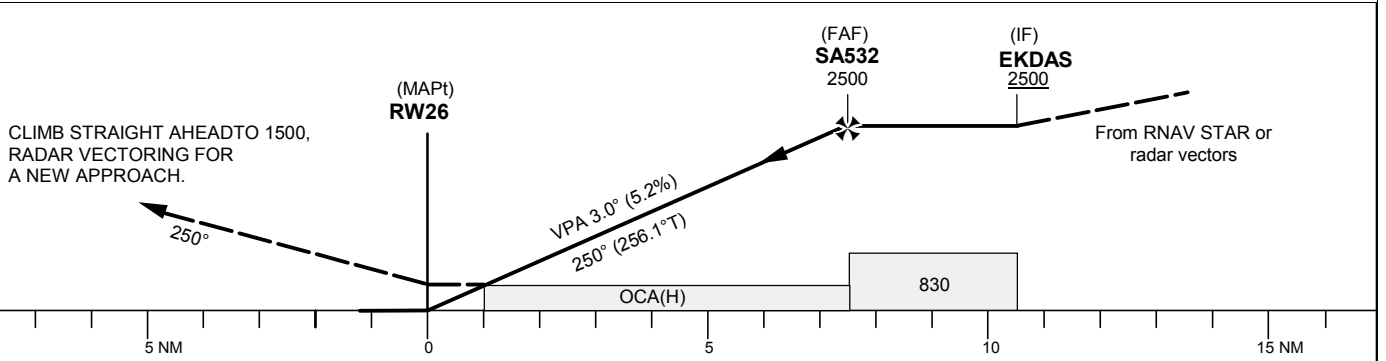
**INSTRUMENT APPROACH CHART – ICAO**  
**THR ELEV 124.8 ft, AD ELEV 138 ft**  
 OCH are related to THR.  
 BRG are MAG (True).  
 ALT, HGT and ELEV in ft.

**ARLANDA TOWER** 128.730/  
118.505/125.130  
**ARLANDA ATIS ARR** 119.005  
**STOCKHOLM APPROACH** 123.755

**RNP z RWY 26**



TA 5000 ft AMSL RDH 50.0 ft Special Com Failure Procedures see ESSA AD 2.22



Cat of ACFT	OCA (H)				Final approach	Distance FAF-MAPt 7.3 NM						
	A	B	C	D		Dist to RW26	7	6	5	4	3	2
LNAV/VNAV	380(256)	390(266)	397(273)	405(281)	ALT	2400	2080	1770	1450	1130	810	
LNAV	500(370)				GS	kt	80	100	120	140	160	180
					Rate of descent	ft/min	425	530	635	745	850	955

**RNP z RWY 26 via EKDAS**

Path Term	Waypoint Identifier	Fly-over	Course °M(°T)	Dist (NM)	Turn Dir	Rest Alts (ft AMSL)	Speed Limits (kt)	VPA/ RDH (°/ft)	Rec Navaid	Navigation Specification
IF	EKDAS	-	-	-	-	+2500	-200	-	-	RNP APCH
TF	SA532	-	250° (256.2°)	3.0	-	@2500	-	-	-	RNP APCH
TF	RW26	Y	250° (256.1°)	7.3	-	@175	-	-3.0/50	-	RNP APCH
CA	-	-	250° (256.1°)	-	-	@1500	-	-	ARL	RNP APCH
VM	-	-	250°	-	-	-	-	-	-	RNP APCH