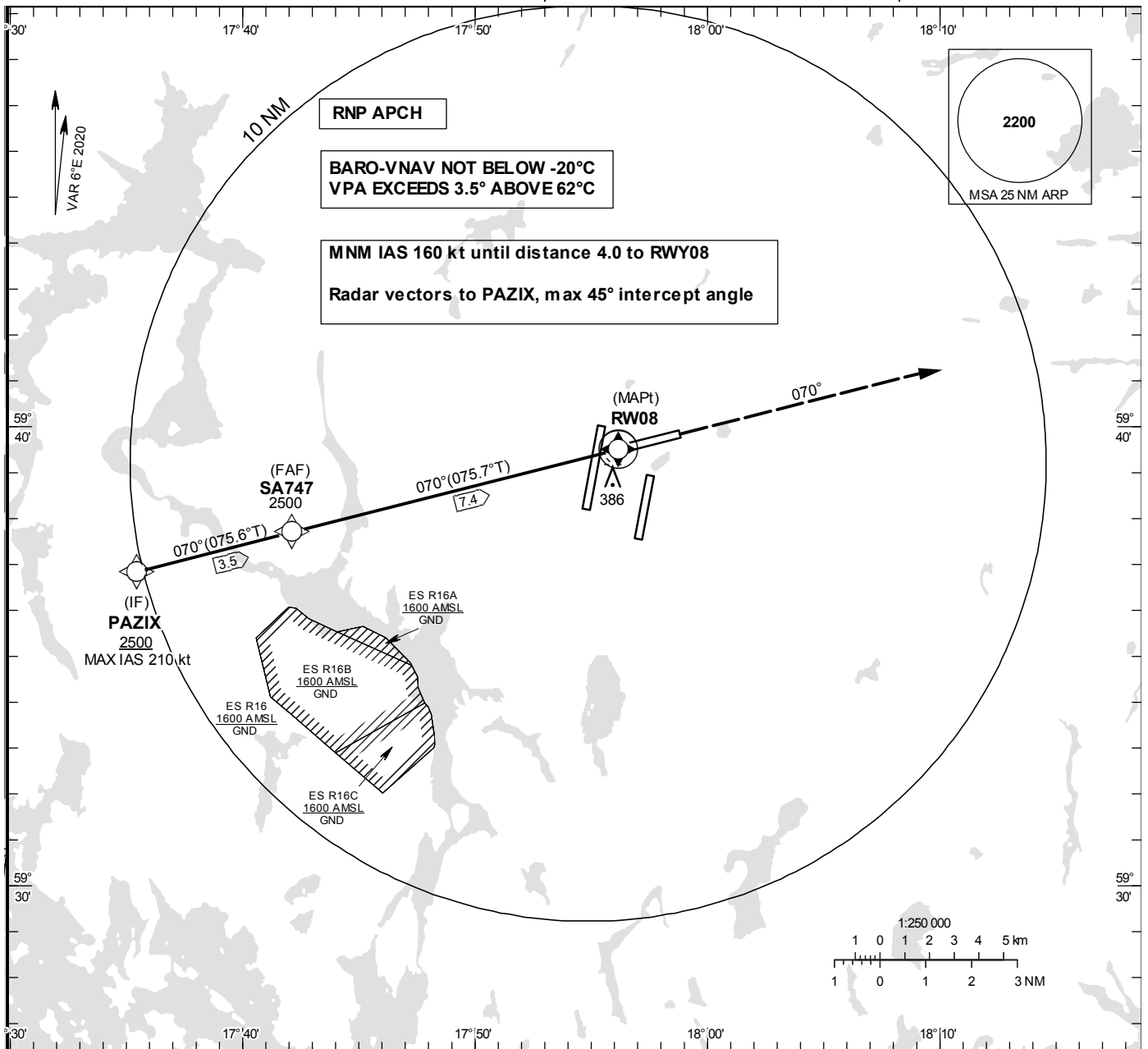


INSTRUMENT APPROACH CHART – ICAO

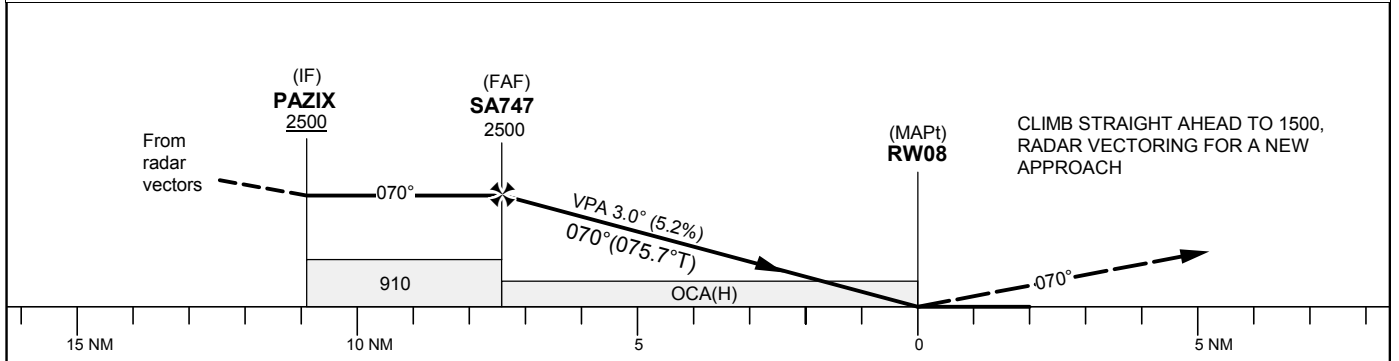
THR ELEV 108 ft, AD ELEV 138 ft
 OCH are related to THR.
 BRG are MAG (True).
 ALT, HGT and ELEV in ft.

ARLANDA TOWER 128.730/
118.505/125.130
ARLANDA ATIS ARR 119.005
STOCKHOLM APPROACH 123.755

RNP RWY 08



TA 5000 ft AMSL RDH 50.0 ft Special COM Failure Procedures see ESSA AD 2.22



Cat of ACFT	OCA (H)				Final approach							
	A	B	C	D	Distance FAF-MAPt 7.4 NM							
LNAV/VNAV	501(393)	511(403)	532(424)	546(438)	Dist to RW08 (NM)	7	6	5	4	3	2	
LNAV	630(520)	630(520)	630(520)	630(520)	ALT	2387	2069	1750	1432	1113	795	
					GS	kt	80	100	120	140	160	180
					Rate of descent	ft/min	425	530	635	745	850	955

RNP RWY 08 via PAZIX

Path Desc	Waypoint Identifier	Fly-over	Course °M(°T)	Dist (NM)	Turn Dir	Altitude	Speed	VPA/RDH	Rec Navaid	Navigation Specification
IF	PAZIX	-	-	-	-	+2500	-210	-	-	RNP APCH
TF	SA747	-	070°(075.6°)	3.5	-	@2500	-	-	-	RNP APCH
TF	RW08	Y	070°(075.7°)	7.4	-	@158	-	-3.00	-	RNP APCH
CA	-	-	070°(075.7°)	-	-	@1500	-	-	ARL	RNP APCH
VM	-	-	070°	-	-	-	-	-	-	RNP APCH