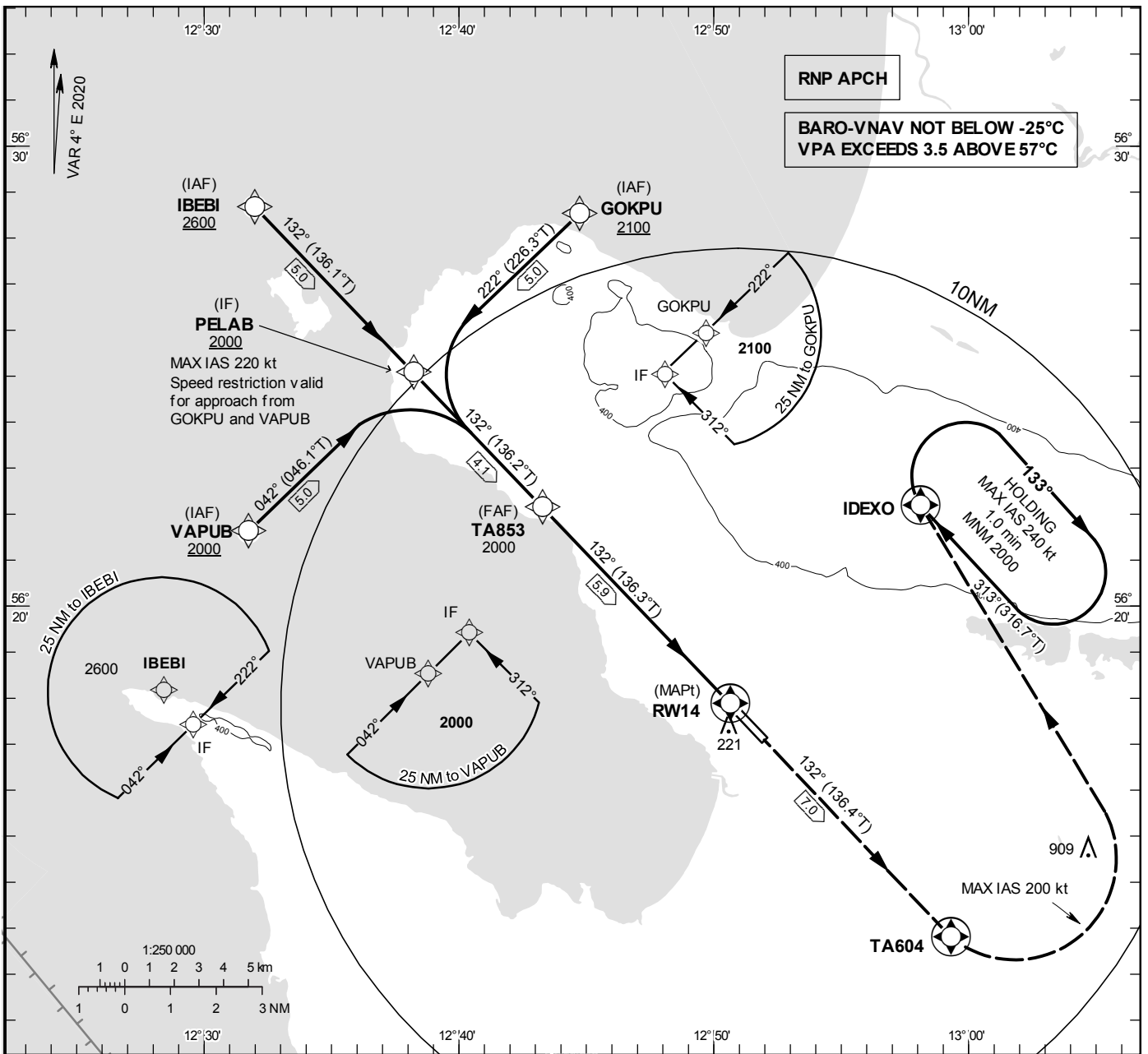


**INSTRUMENT
APPROACH
CHART – ICAO**

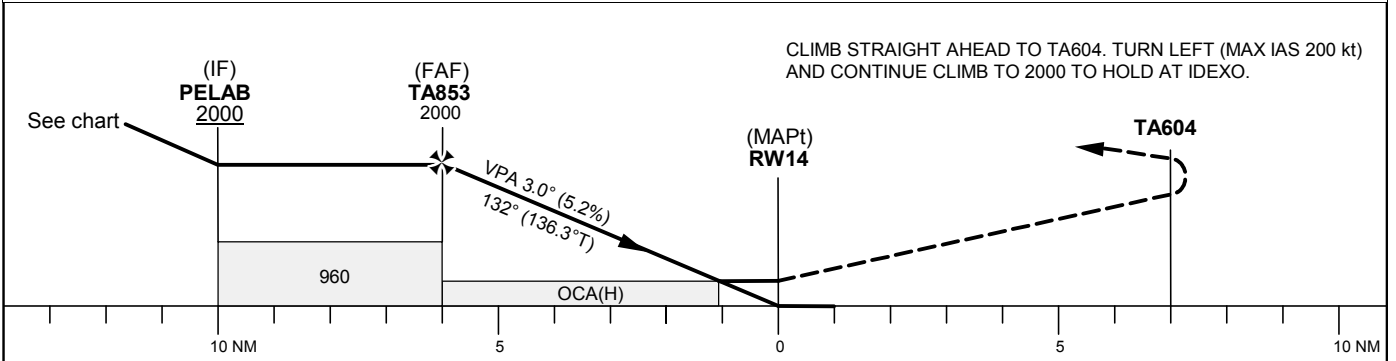
THR ELEV 60.2 ft, AD ELEV 62 ft
 OCH are related to THR.
 BRG are MAG (True).
 ALT, HGT and ELEV in ft.

ÄNGELHOLM TOWER	127.105
ÄNGELHOLM APPROACH	132.455

RNP RWY 14



TA 5000 ft AMSL RDH 50 ft



Cat of ACFT	OCA (H)				Final approach	Distance FAF-MAPt 5.9 NM						
	A	B	C	D	Dist to RW14	5	4	3	2			
LNAV/VNAV	360(300)	370(310)	380(320)	390(330)	ALT	1700	1380	1070	750			
LNAV	470(410)				GS	kt	80	100	120	140	160	180
					Rate of descent	ft/min	425	530	635	745	850	955

Instrument Approach Procedure Coding Tables

RNP RWY 14 via IBEBI

Path Desc	Waypoint Identifier	Fly-over	Course °M(°T)	Dist (NM)	Turn Dir	Altitude	Speed	VPA/RDH	Rec Navaid	Navigation Specification
IF	IBEBI	-	-	-	-	+2600	-	-	-	RNP APCH
TF	PELAB	-	132°(136.1°)	5.0	-	+2000	-	-	-	RNP APCH

RNP RWY 14 via VAPUB

Path Desc	Waypoint Identifier	Fly-over	Course °M(°T)	Dist (NM)	Turn Dir	Altitude	Speed	VPA/RDH	Rec Navaid	Navigation Specification
IF	VAPUB	-	-	-	-	+2000	-	-	-	RNP APCH
TF	PELAB	-	042°(046.1°)	5.0	-	+2000	-220	-	-	RNP APCH

RNP RWY 14 via GOKPU

Path Desc	Waypoint Identifier	Fly-over	Course °M(°T)	Dist (NM)	Turn Dir	Altitude	Speed	VPA/RDH	Rec Navaid	Navigation Specification
IF	GOKPU	-	-	-	-	+2100	-	-	-	RNP APCH
TF	PELAB	-	222°(226.3°)	5.0	-	+2000	-220	-	-	RNP APCH

Path Desc	Waypoint Identifier	Fly-over	Course °M(°T)	Dist (NM)	Turn Dir	Altitude	Speed	VPA/RDH	Rec Navaid	Navigation Specification
IF	PELAB	-	-	-	-	+2000	-	-	-	RNP APCH
TF	TA853	-	132°(136.2°)	4.1	-	@2000	-	-	-	RNP APCH
TF	RW14	Y	132°(136.3°)	5.9	-	@110	-	-3.0/50	-	RNP APCH
TF	TA604	Y	132°(136.4°)	7.0	-	-	-200	-	-	RNP APCH
DF	IDEXO	Y	-	-	-	-	-	-	-	RNP APCH

ESTA Holding IDEXO

Path Desc	Waypoint Identifier	Fly-over	Course °M(°T)	Dist (NM)	Turn Dir	Altitude	Speed	VPA/RDH	Rec Navaid	Navigation Specification
HM	IDEXO	Y	313°(316.7°)	-	R	+2000	-240	-	-	RNAV 1