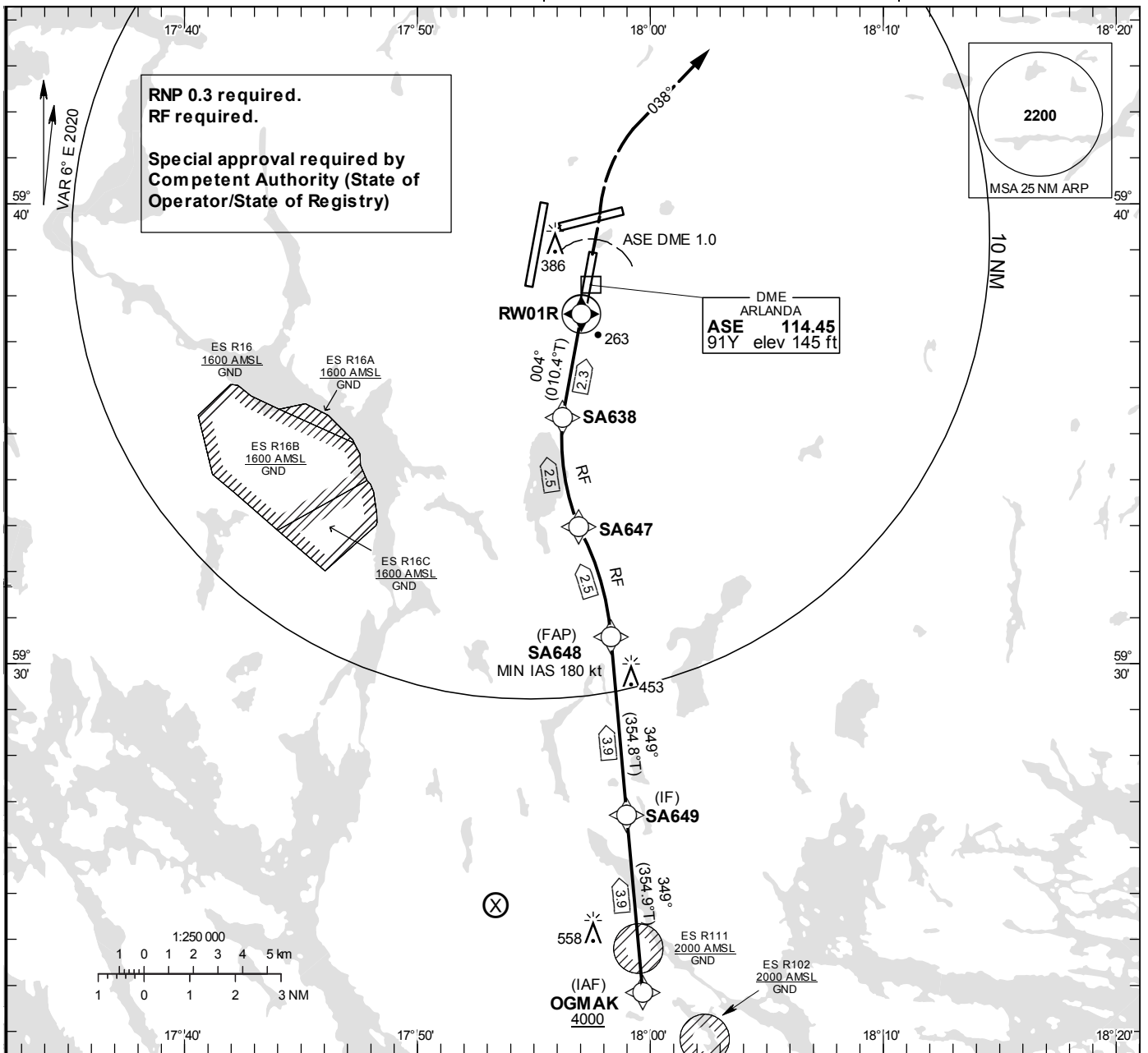


INSTRUMENT APPROACH CHART – ICAO

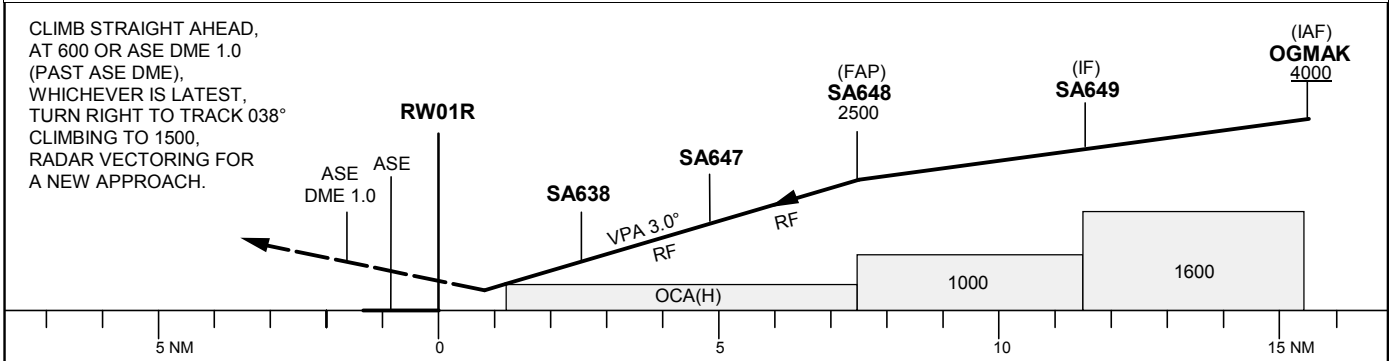
THR ELEV 138.0 ft, AD ELEV 138 ft
 OCH are related to THR.
 BRG are MAG (True).
 ALT, HGT and ELEV in ft.
NA BELOW -30° C

ARLANDA TOWER 128.730/
118.505/125.130
ARLANDA ATIS ARR 119.005
STOCKHOLM APPROACH 123.755

RNP y RWY 01R (AR)



TA 5000 ft AMSL RDH 50.9 ft Special Com Failure Procedures see ESSA AD 2.22



| OCA (H) | | | | |
|-------------|-----------|-----------|-----------|-----------|
| Cat of ACFT | A | B | C | D |
| RNP (0.3) | 489 (351) | 497 (359) | 509 (371) | 520 (382) |

Prescribed Coding/Description RNP y RWY 01R (AR)

| Path Desc | Waypoint Identifier | Fly-over | Course °M(°T) | Dist (NM) | Turn Dir | Altitude | Speed | VPA/RDH | ARC Radius (NM) | ARC Center | Nav Spec |
|-----------|---------------------|----------|---------------|-----------|----------|----------|-------|---------|-----------------|------------|----------|
| IF | OGMAK | - | - | - | - | +4000 | - | - | - | - | RNP 1.0 |
| TF | SA649 | - | 349°(354.9°) | 3.9 | - | - | - | - | - | - | RNP 1.0 |
| TF | SA648 | - | 349°(354.8°) | 3.9 | - | 2500 | +180 | - | - | - | RNP 1.0 |
| RF | SA647 | - | - | 2.5 | L | - | - | -3.0 | 6.5172 | SA746 | RNP 0.3 |
| RF | SA638 | - | - | 2.5 | R | - | - | -3.0 | 3.7094 | SA646 | RNP 0.3 |
| TF | RW01R | - | 004° (010.4°) | 2.3 | - | 188 | - | -3.0 | - | - | RNP 0.3 |